

MayTex-Acryl with Texgard impregnation

- material: 100% polyacrylic, spun-dyed, weight 300g/m² ±5%
- water column (fabric water tightness) 370 mm, European standard EN 20 811
- colour fastness: grade ≥7 (against bleaching), tested acc. to standard EN ISO 105-B02 (1= min., 8= max.)
- protection against UV rays: UPF 40-80, tested acc. to UV standard 801 (cf. page 135 for individual values)
- weather-proof, high and low temperature resistant
- Texgard impregnation gives effective protection against oil, grease, mildew and algae, industrial pollution, exhaust fumes and other negative environmental factors
- tested acc. to Oko-Tex standard 100
- imprinted ads: on parasol canopy and valance in durable, brilliant screen-printing quality
- cleaning: easy to clean with CleanoMay 13, even when mounted



SA 314 010 white
similar to RAL 9003
bordering 00 white



SA 314 033 ivory
similar to RAL 1013
bordering 20 ivory



SA 314 325 ecru
similar to RAL 1013
bordering 52 nature



SA 314 044 grey/white
similar to RAL 7004
bordering 18 silver



SA 314 364 telegrey/white
similar to RAL 7046
bordering 147 opal



SA 314 471 silver-grey/dark brown knopped
similar to RAL 1013/7006
bordering 18 silver



SA 314 344 multi-colour
similar to RAL 7035
bordering 18 silver or multi-colour



SA 314 018 white/grey knopped
similar to RAL 9016
bordering 00 white or 18 silver



SA 314 580 white, yellow/grey knopped
similar to RAL 9002
bordering 18 silver or 00 white



SA 314 583 yellow, grey/yellow knopped
similar to RAL 1023/1013
bordering 18 silver or 20 ivory



SA 314 045 pyrite
similar to RAL 1002
bordering 10 pyrite



DA 7560 light yellow
similar to RAL 1023
bordering 10 pyrite



SA 314 003 yellow
similar to RAL 1023
bordering 32 yellow



SA 314 038 beige
similar to RAL 1019
bordering 11 beige



SA 314 008 ochre
similar to RAL 1034
bordering 15 ochre



SA 314 014 mandarin
similar to RAL 1033
bordering 79 mandarin



SA 314 019 terracotta
similar to RAL 2012
bordering 48 terracotta



SA 314 002 orange
similar to RAL 2004
bordering 81 orange



SA 314 001 cherry
similar to RAL 3020
bordering 85 cherry



SA 314 347 ruby
similar to RAL 3003
bordering 85 cherry



SA 314 763 bordeaux
similar to RAL 3004
bordering 86 bordeaux



SA 314 362 dark green
similar to RAL 6005
bordering 95 dark green



SA 314 011 royal blue
similar to RAL 5010
bordering 62 royal blue



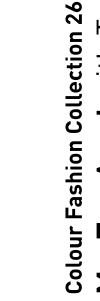
SA 314 006 sapphire
similar to RAL 5002
bordering 66 sapphire



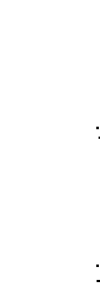
SA 314 271 navy blue/black
similar to RAL 5011, bordering
19 black or 91 navy blue



SA 314 154 black
similar to RAL 9017
bordering 19 black



SA 314 016 dark brown
similar to RAL 8017
bordering 27 dark brown



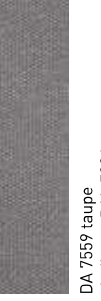
DA 8779 olive brown
similar to RAL 7002
bordering 9533 olive brown



DA 7559 taupe
similar to RAL 7006
bordering 926 taupe



SA 314 546 blue patina
similar to RAL 5007
bordering 187 blue patina



SA 314 624 green patina
similar to RAL 6000
bordering 162 green patina



DA 8203 grey basalt
similar to RAL 7010
bordering 97 grey basalt

Colour Fashion Collection 26 MayTex-Acryl with Texgard impregnation

The shades shown here are not in accordance with the original ones. If requested, we will be pleased to send you a collection of original cloth samples.